

34 Years of WisDOT Wetland Mitigation

Past, Present & Future



Robert E. Pearson, P.G., Jennifer J. Gibson
Wisconsin Department of Transportation

History

WisDOT was an early adopter in developing a single client statewide umbrella bank agreement. The agreement was conceived in the late 1980s and formally established in 1993 for the purpose of streamlining permit approvals for WisDOT administered projects. Since 2012, new sites are being developed as individual bank instruments for smaller bank service areas. WisDOT does not purchase credits from others and is focused on improving restoration techniques and protecting sites.

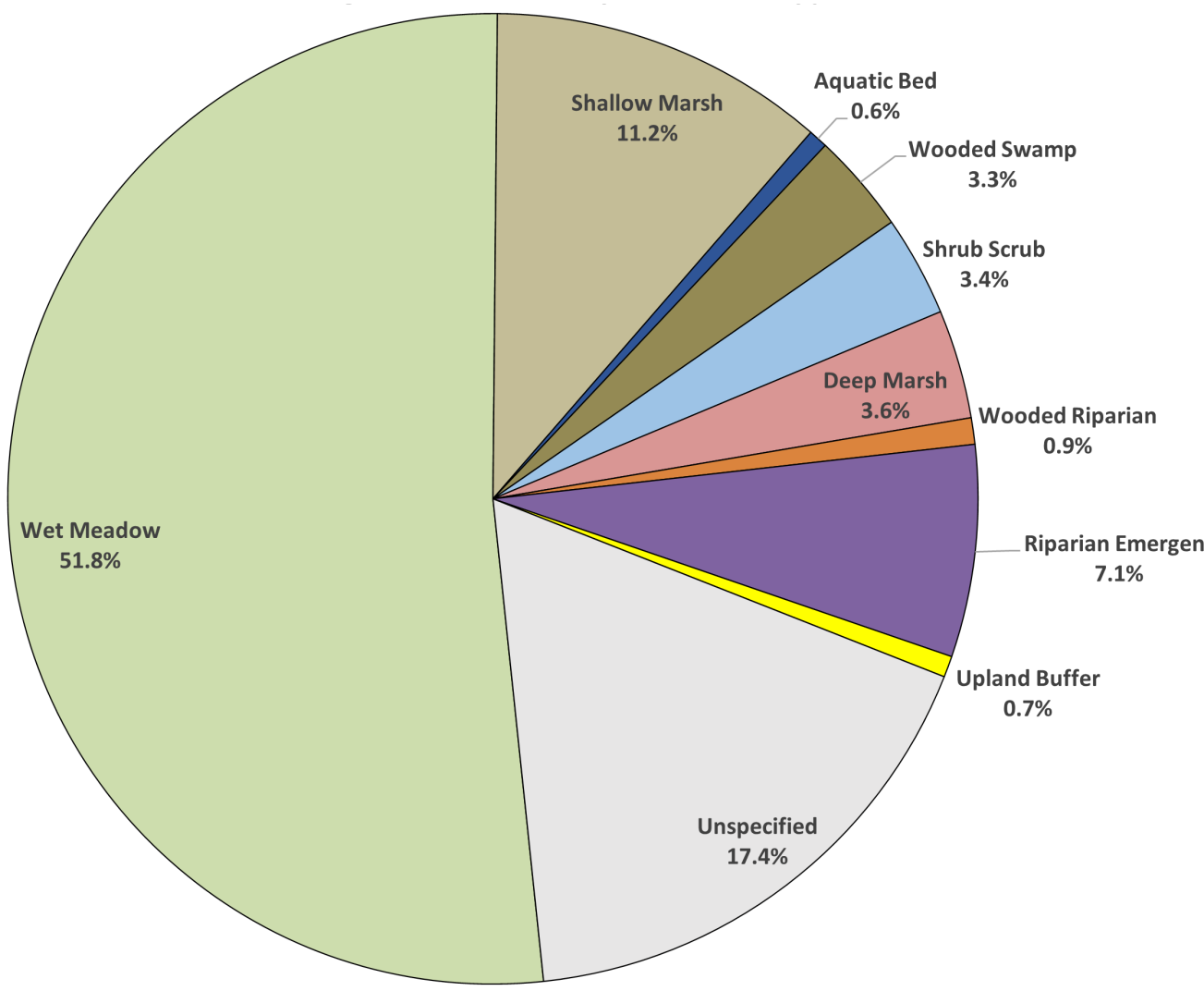
Credit Development & Use

Mitigation Bank Credit Development and Use



Bank credits developed and used over time. Permittee-responsible credits are not displayed.

Wetland Mitigation Credits by Type



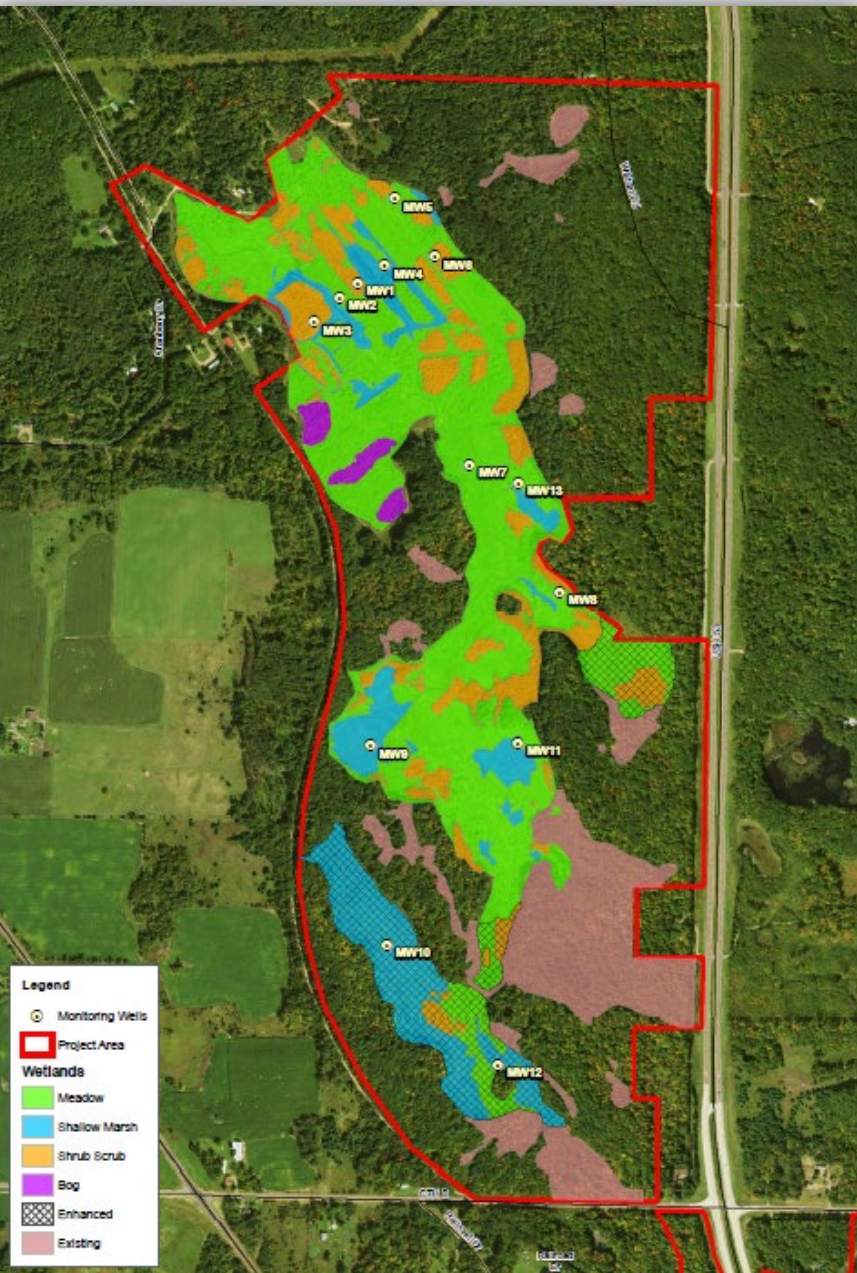
Bank and permittee-responsible credits developed since the program's inception.

Site Selection & Design

WisDOT selects sites that allow for restoration of historic wetland types and hydrologic regimes whenever possible. Consideration is also given to the incorporation of other elements, such as stream mitigation and pollinator habitat, to work toward holistic restoration.



East Troy Bank, Walworth Co.



Beaver Brook Bank, Washburn Co.



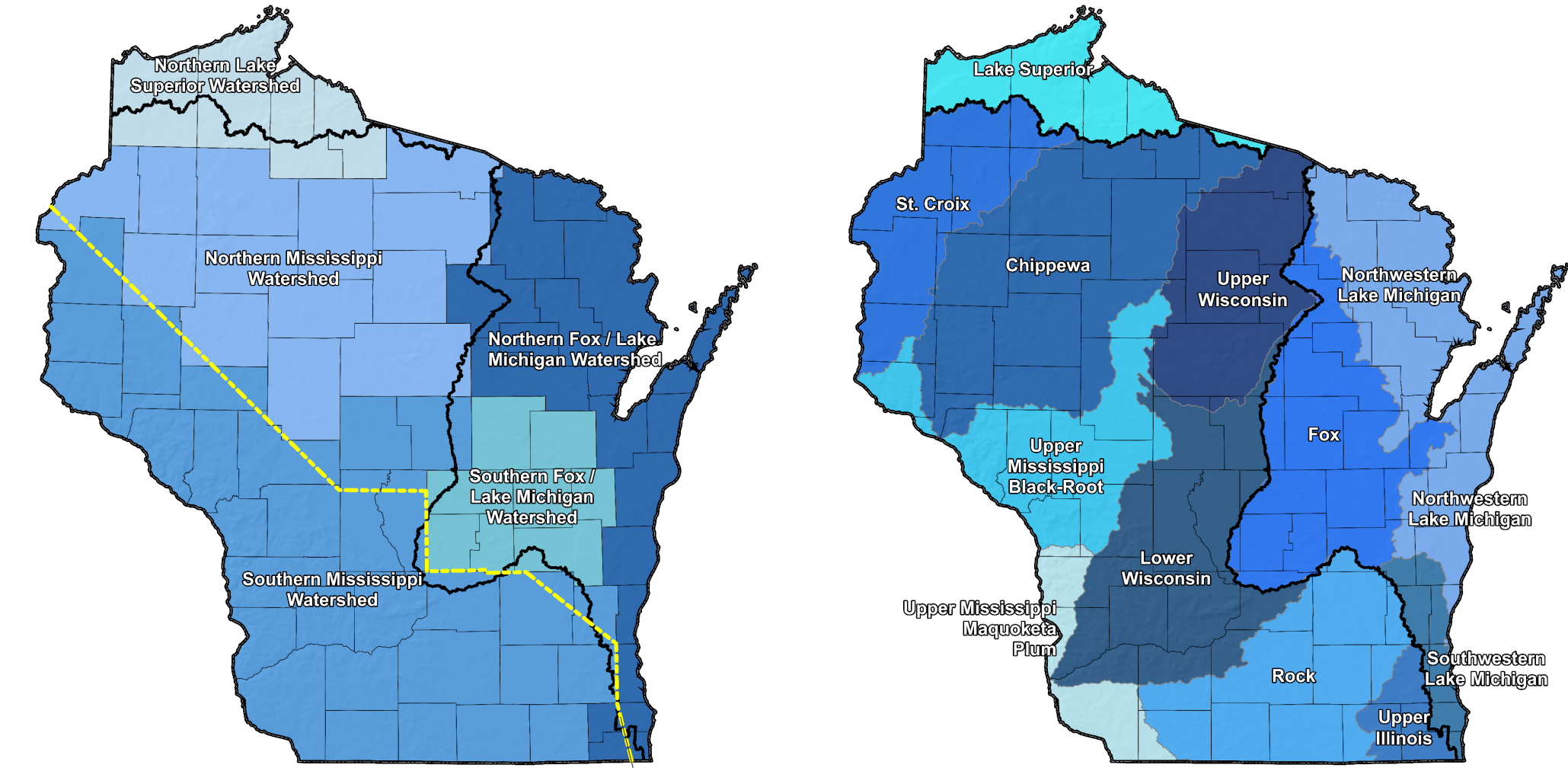
Peshtigo Brook Phase 2 Bank, Oconto Co.



World Dairy Bank, Dane Co.

Bank Service Areas

WisDOT's wetland bank program was set up with 5 bank service areas (BSAs), representing major drainage basins and floristic provinces, simplistically defined by county boundaries. WisDOT has begun adopting WDNR's BSAs for newly developed bank sites.



Original

Future

- Legend
- Bank Site Location and Open/Closed Status (44 Sites)
 - New Bank Development Site (2 Sites)
 - Consolidation Site Location and Open/Closed Status (41 Sites)
 - Project Specific Mitigation On-Site or Near-Site (178 Sites)
 - Curtis Tension Zone
 - Major Basin Boundary

Critical Considerations for Success

- Holistic restoration – Design projects to maximum benefit to the environment
- Nature knows best – Site selection and restoration methods are keys to success
- Multidisciplinary team – Engage internal/external partners for comprehensive approach
- Vegetation management – Conduct pre/post restoration management using multiple strategies
- Systems & data management – Plan, do, check, track, improve, innovate
- Strategic thinking – Implement long-term planning and vision to avoid “just in time” sites

Property Management

WisDOT implements a variety of vegetation management techniques at open and closed sites, including herbicide treatments, mowing, biocontrol, brush clearing and prescribed burns. WisDOT also conducts site inspections, completes routine maintenance, and coordinates public access and use at its mitigation sites.



Social media post for prescribed burn, London Bank, Jefferson Co.

Presented at the Wisconsin Wetlands Association Conference - February 2022

Special thanks to WisDOT staff and ecological services consultants for wetland program support